

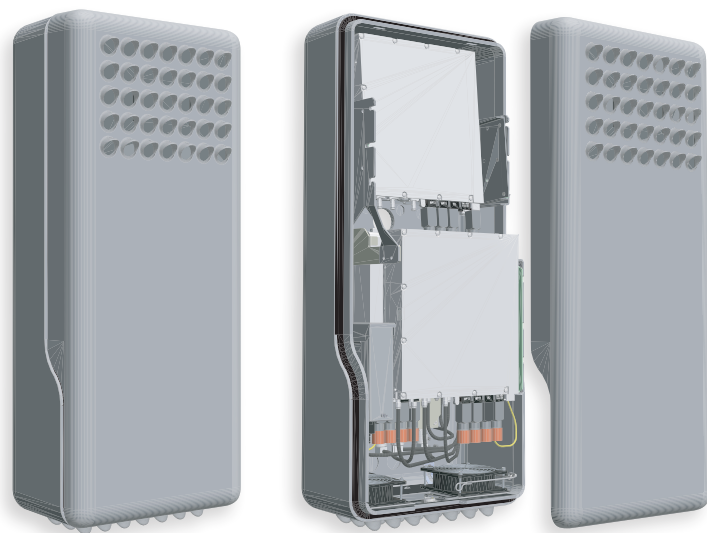
# MID-POLE SMALL CELL CONCEALMENT SHROUD

35"H X 15.5"W X 9"D | PART # AF000141



## CONCEALMENT SOLUTIONS

Our portfolio of concealment solutions, designed to service carriers and integrators in the telecom industry, includes a variety of preconfigured options as well as custom integrations to meet customer-specific applications. With the acquisition of Schroff Technologies (Schrofftech), RFI is able to leverage a long-standing track record and outstanding operational capabilities to fully support any project.



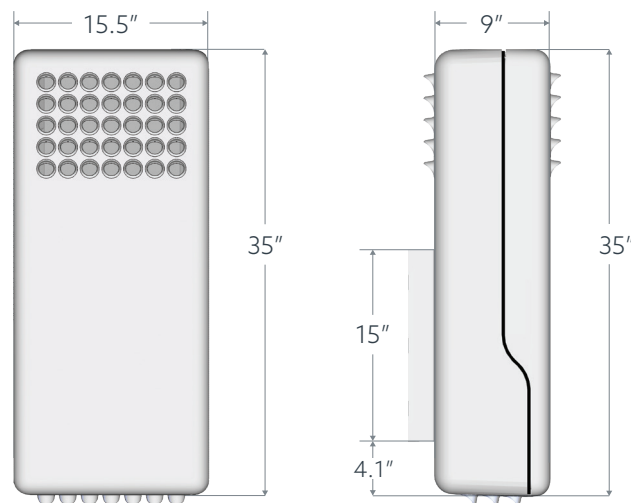
## FEATURES

- Houses up to 4 radios
- Vented NEMA 3R enclosure
- RF transparent housing for interior antenna applications
- Removable cover to facilitate access to equipment for field servicing and radio swap/upgrade
- Carrier and municipality approvals
- Rear EMT connection cutout for power, RF cabling & fiber routing through hollow utility poles
- Secures to poles with customer supplied SS bands
- Choice of grey, black, brown and green to meet local specifications

## PHYSICAL SPECIFICATIONS

Part Number	AF000141
Dimensions	35"H x 15.5"W x 9"D
Weight (without radios)	45 lbs.
Operating Temperature Range	Min -30° C to Max 45° C*
Storage Temperature Range	Min -40° C to Max 70° C

\*Subject to radio specifications



## INTEGRATED SOLUTIONS

Save time and cost on installation with our preconfigured radio equipment, connectivity and line power kits.

For those instances where a custom solution is required, RF Industries engineers are able to quickly develop a customized solution to meet your unique specifications. Our engineers have expertise in all four key engineering disciplines including electrical engineering, mechanical engineering, thermal engineering, and RF engineering allowing us to optimize the most robust solution into the smallest footprint.

### PART # AF000141 RADIO EQUIPMENT KIT OPTIONS

*(Radios supplied by customers)*

#### N1 CONTENTS:

Nokia Airscale Radio AHFB (PCS1900)  
Nokia Airscale Radio AHIB (AWS2100)  
Nokia Airscale Radio AZRB (LAA)  
AWS/PCS Dual Diplexers (Qty. 2) – Sourced by RFI

#### C1 CONTENTS:

Commscope ION-M Radio

#### C1E7 CONTENTS:

Commscope ION-M Radio  
Ericsson 220x Radios (Qty. 3)

## PRECONFIGURED RADIO EQUIPMENT KITS INCLUDE

Radio Brackets	All brackets to mount equipment into shroud for a given set
Power Distribution Unit	PDU for this equipment set, incl. internal power wiring and switches
Internal RF Cabling	All internal RF cables for selected equipment if applicable
Internal Fiber Cables	All internal fiber cables for selected equipment if applicable
Cooling System	Internal cooling system (fans, temp. sensors, control) for selected equipment if applicable

*Other configurations available upon request.*

## ABOUT RF INDUSTRIES

RF Industries (RFI) provides a portfolio of small cell concealment products and integrated solutions to facilitate the rapid deployment of 4G and 5G infrastructure along with the flexibility and creativity to meet the most challenging small cell deployments.

Our high-touch customer approach allows us to be responsive, accessible and hands-on when needed, every step of the way. Unlike large organizations, you will always be our number one priority. Our end-to-end support promises personal attention, guidance, and partnership all the way through site deployment.

RFI's unique flexibility also gives us a competitive advantage. As an agile business, we are able to identify and react to challenges quickly and easily, resulting in a smoother overall customer experience.



### RF INDUSTRIES

rfindustries.com  
800.233.1728

7610 Miramar Road  
San Diego, CA 92126

